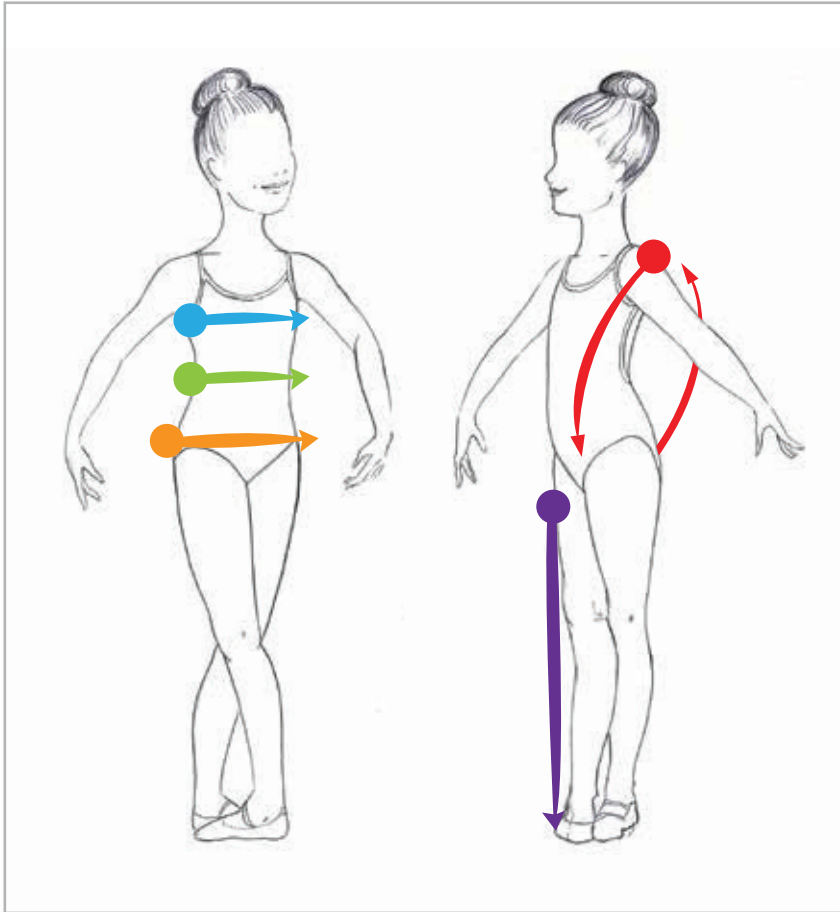


'How To' Measuring Guide



● GIRTH

Measure from the center of one shoulder, down the front of the torso, through the crotch and up the back to the starting point.

● BUST

Make sure the dancer's arms are in a relaxed demi port de bras (as shown in picture), continue to measure around the fullest part of the chest, keeping the tape measure parallel to the floor.

● WAIST

Measure around the natural waistline, the narrowest part of the upper body (never measure over shirt or pants).

● HIPS

Measure around the fullest part of the lower body, keeping tape straight and parallel to the floor.

● INSEAM

Measure from the inside of the leg from the crotch down to the ankle bone.

***Costumes that are UNISEX sizes are sized according to women's measurements.

Remember...

If a child seems like they may be an adult measurement:

Call a Dazzler.

If a child does not fit within the existing measurements:

Call a Dazzler.

If a custom size is needed:

Call a Dazzler.

When in doubt:

Call a Dazzler.

The measurements of the size chart are based on fit models and are our recommendations. Our customer service Dazzlers are available to provide you additional support and answer any questions you may have regarding sizing. Special sizing information may be included in fit details of costumes.

Sizing Tips

- Measure carefully!
- Hold tape measure loosely when measuring.
- Make sure students are wearing a leotard and tights, standing up straight.
- Girth is the most important measurement when deciding on a size.
- Remember, young children will continue to grow.